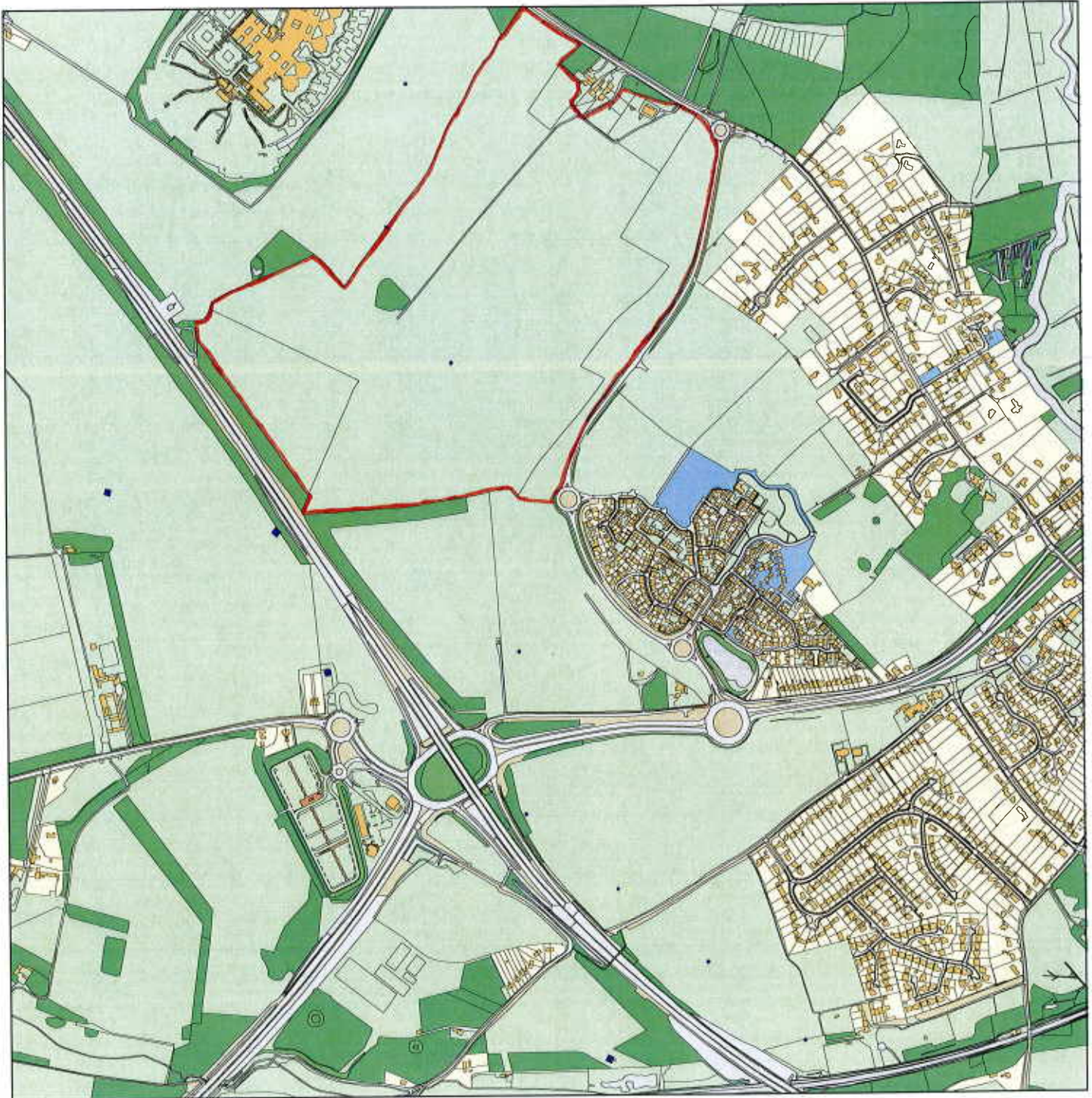


Cringleford Neighbourhood Plan SEA - Option 1



Scale : 1:11623

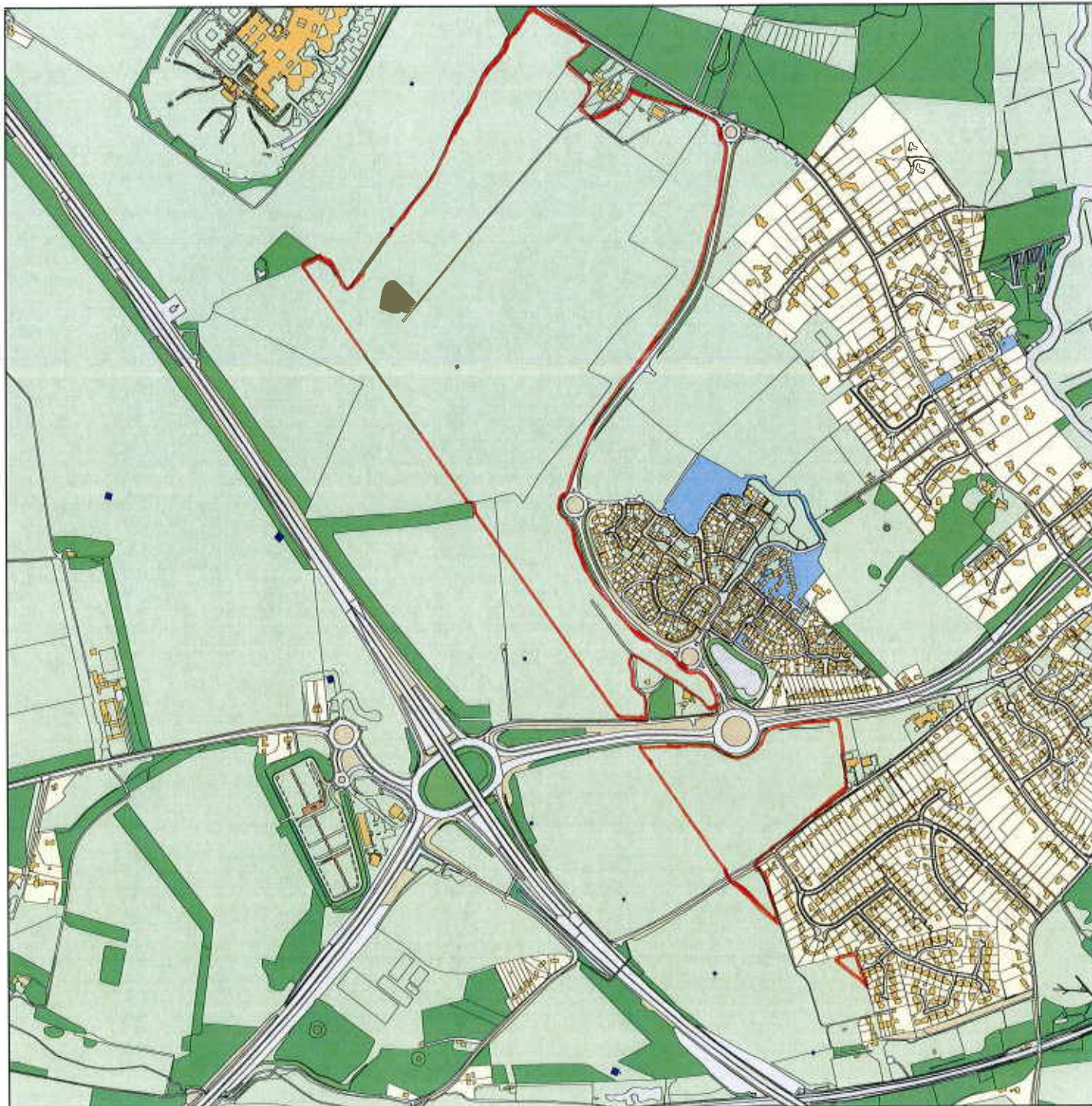
Reproduced from the Ordnance Survey map with the permission of the Controller of Her Majesty's Stationery Office © Crown Copyright 2000.

Unauthorised reproduction infringes Crown Copyright and may lead to prosecution or civil proceedings.

Produced using ESRI (UK)'s MapExplorer 2.0 - <http://www.esriuk.com>

Organisation	South Norfolk Council
Department	
Comments	
Date	04 June 2013
SLA Number	

Cringleford Neighbourhood Plan SEA - Option 2



Scale : 1:11623

Reproduced from the Ordnance Survey map with the permission of the Controller of Her Majesty's Stationery Office © Crown Copyright 2000.

Unauthorised reproduction infringes Crown Copyright and may lead to prosecution or civil proceedings.

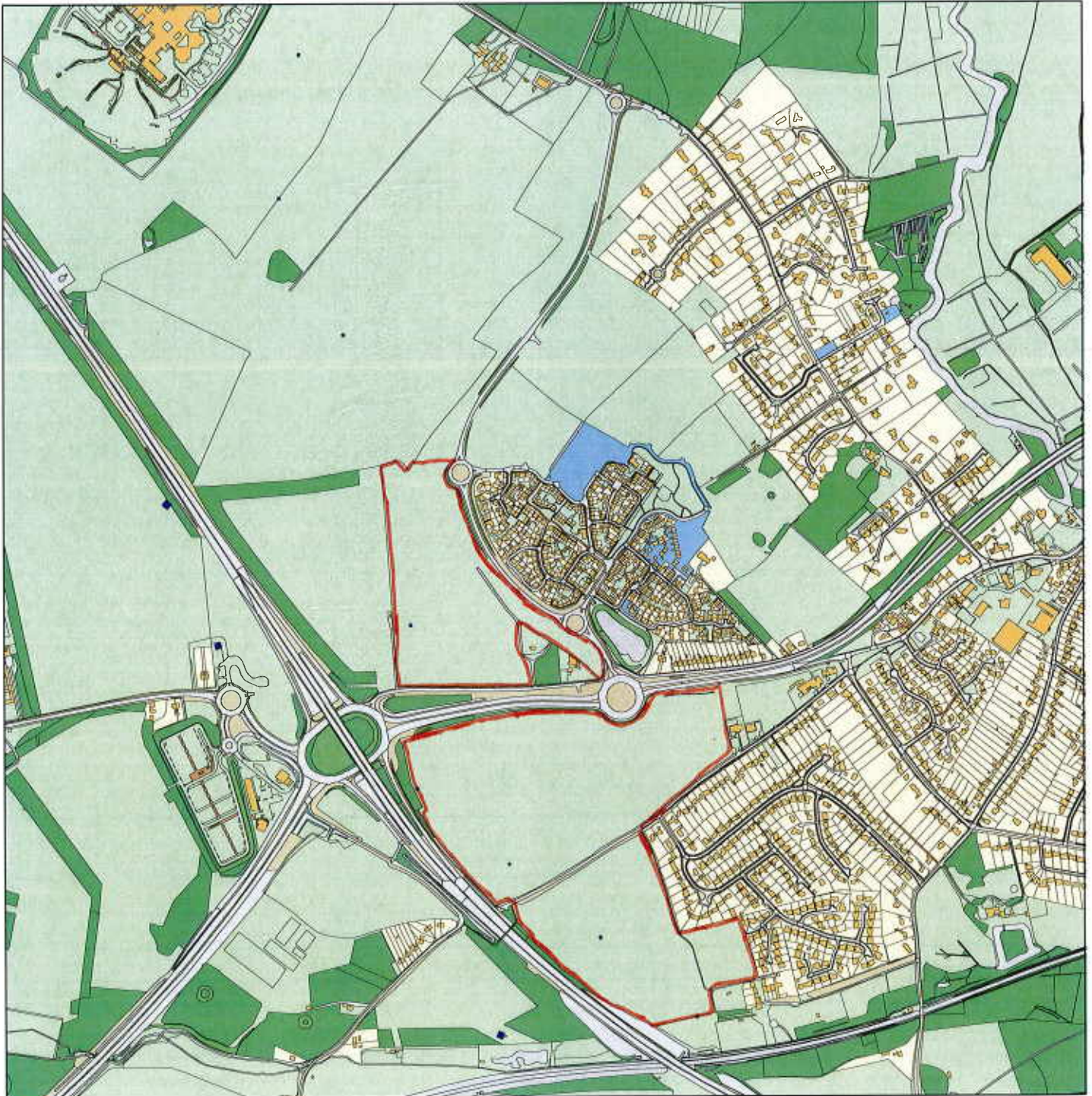
Produced using ESRI (UK)'s MapExplorer 2.0 - <http://www.esriuk.com>

Organisation	South Norfolk Council
Department	
Comments	
Date	04 June 2013
SLA Number	

Cringleford Neighbourhood Plan SEA - Option 3



GIS by ESRI (UK)



Scale : 1:11623

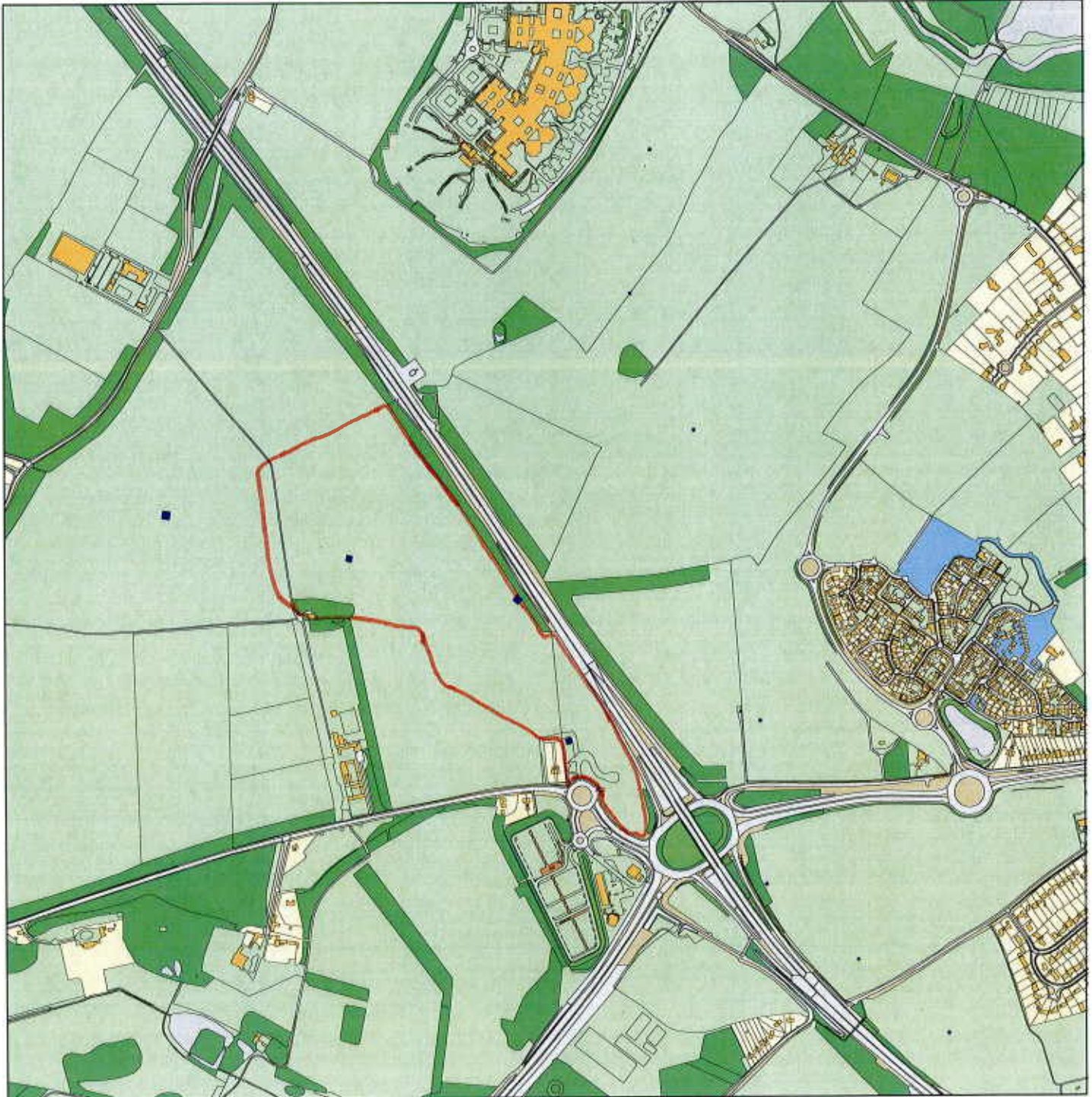
Reproduced from the Ordnance Survey map with the permission of the Controller of Her Majesty's Stationery Office © Crown Copyright 2000.

Unauthorised reproduction infringes Crown Copyright and may lead to prosecution or civil proceedings.

Produced using ESRI (UK)'s MapExplorer 2.0 - <http://www.esriuk.com>

Organisation	South Norfolk Council
Department	
Comments	
Date	04 June 2013
SLA Number	

Cringleford Neighbourhood Plan SEA - Option 4



Scale : 1:11623

Reproduced from the Ordnance Survey map with the permission of the Controller of Her Majesty's Stationery Office © Crown Copyright 2000.

Unauthorised reproduction infringes Crown Copyright and may lead to prosecution or civil proceedings.

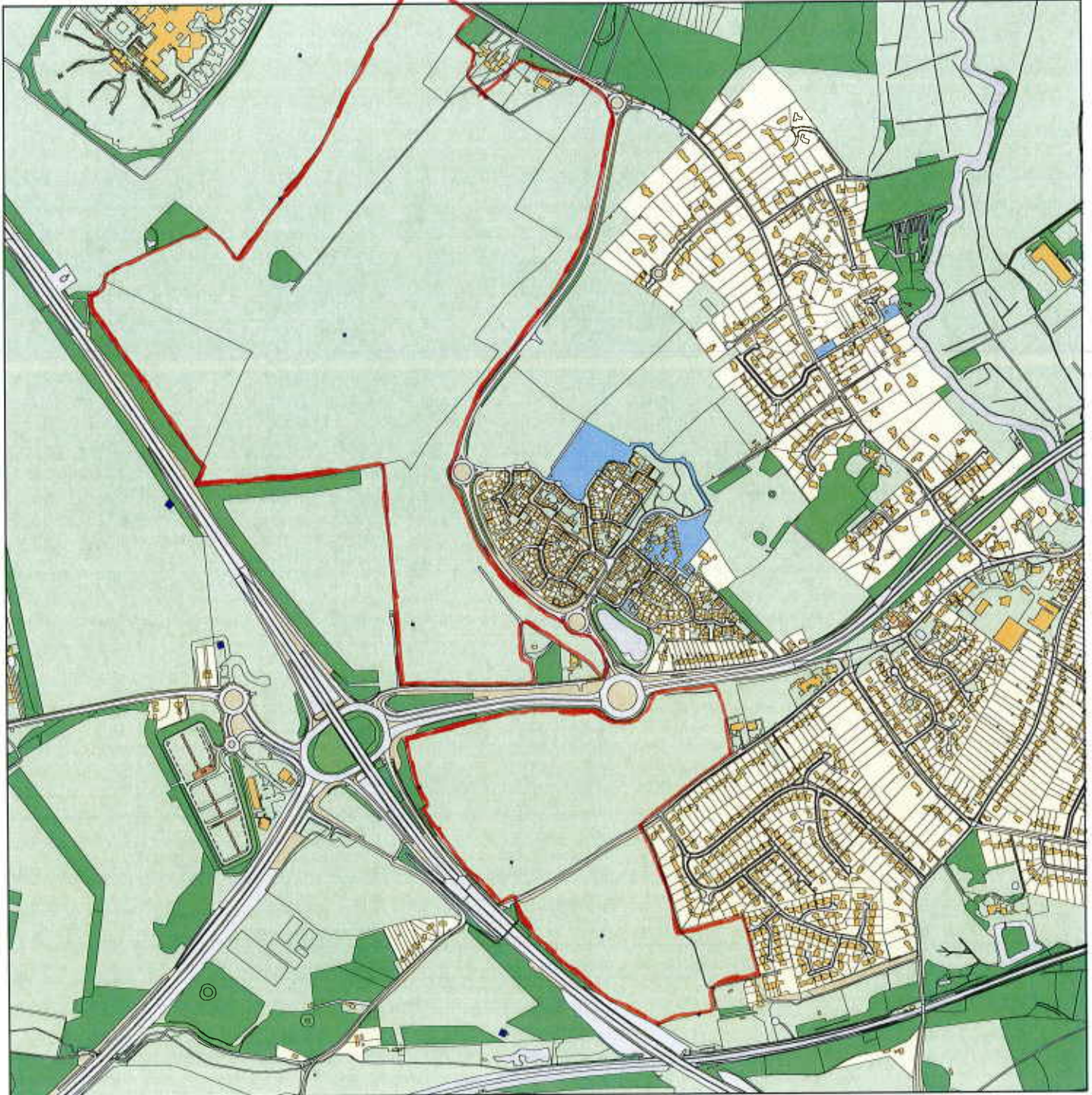
Produced using ESRI (UK)'s MapExplorer 2.0 - <http://www.esriuk.com>

Organisation	South Norfolk Council
Department	
Comments	
Date	04 June 2013
SLA Number	

Cringleford Neighbourhood Plan SEA - Option 5



GIS by ESRI (UK)



Scale : 1:11623

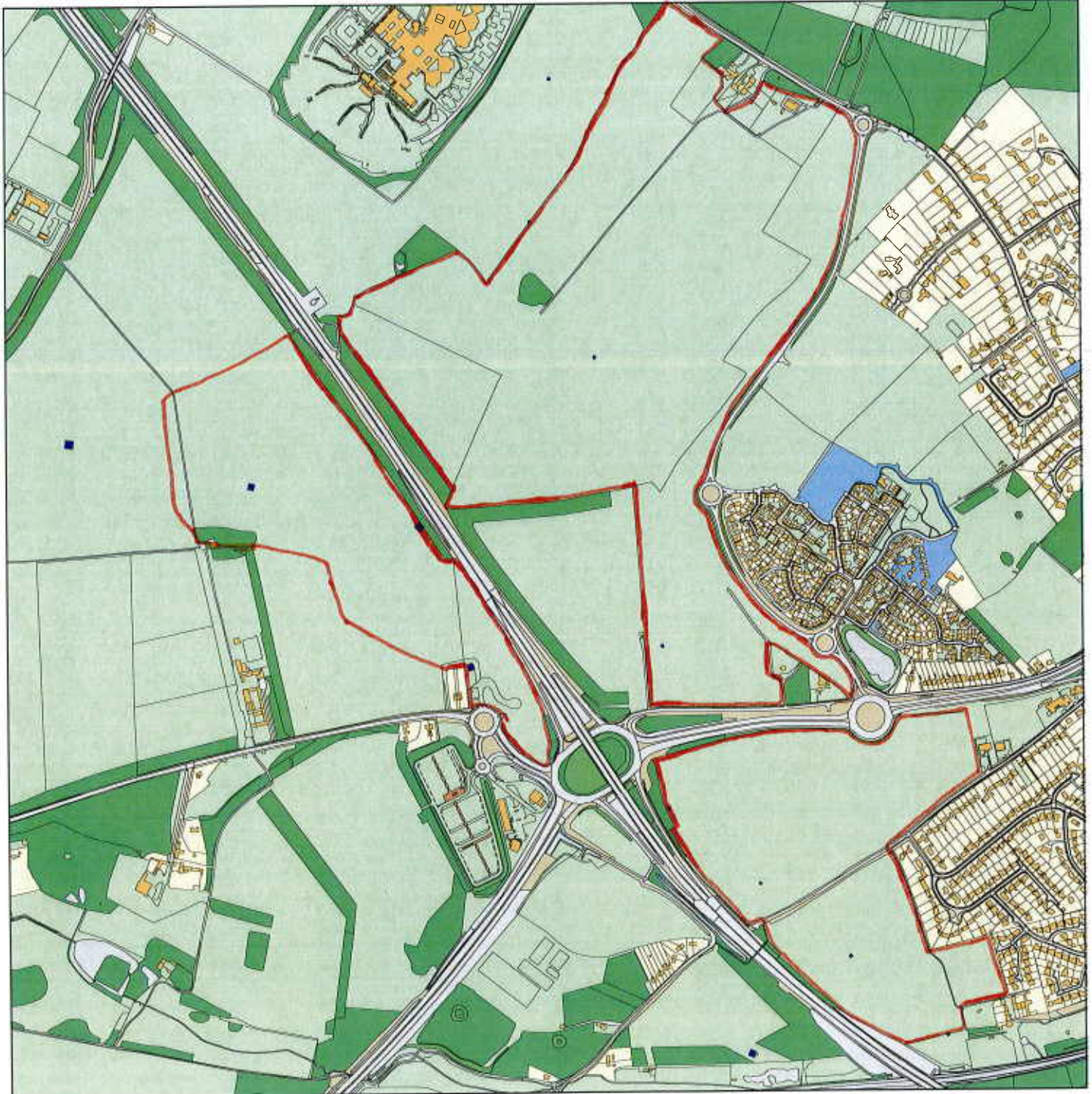
Reproduced from the Ordnance Survey map with the permission of the Controller of Her Majesty's Stationery Office © Crown Copyright 2000.

Unauthorised reproduction infringes Crown Copyright and may lead to prosecution or civil proceedings.

Produced using ESRI (UK)'s MapExplorer 2.0 - <http://www.esriuk.com>

Organisation	South Norfolk Council
Department	
Comments	
Date	04 June 2013
SLA Number	

Cringleford Neighbourhood Plan SEA - Option 6



Scale : 1:11623

Reproduced from the Ordnance Survey map with the permission of the Controller of Her Majesty's Stationery Office © Crown Copyright 2000.

Unauthorised reproduction infringes Crown Copyright and may lead to prosecution or civil proceedings.

Produced using ESRI (UK)'s MapExplorer 2.0 - <http://www.esriuk.com>

Organisation	South Norfolk Council
Department	
Comments	
Date	04 June 2013
SLA Number	