



***In this issue***

- welcome to our 'bumper' issue and our questionnaire
- support for residents
- parking definitely moves on to consultation phase
- Parish business
- Cringleford developments
- keeping our roads safe
- bus stops
- feel like a long walk?
- have your say on the Norwich Western Link

## Welcome to our 'bumper' issue and our questionnaire

We hope you found the first issue of our newsletter useful. There is so much information to put into this one, we've had to run to extra pages. Over the next few years, the Parish will receive a substantial sum from South Norfolk County Council as our part of the Community Infrastructure Levy that is placed on all developers in the area. Since so many houses are being built in Cringleford at present (around 1300), the sum of money we will receive is significant. The money is tightly restricted and can only be used to support infrastructure or anything else concerned with addressing the demands that development places on the area, so one of our ideas is to construct a Sports Hall in collaboration with Big Sky on the amenity land that they have set aside for sport and recreation. We need your help, however, to put together a Recreational Strategy for the Parish. Once it is finished, we will put our final ideas online as it is very unlikely that we will be able to hold a presentation at The Willow Centre given the current restrictions. In this issue, therefore, we have enclosed a Sport and Leisure Questionnaire for you to complete and send back to us. Please do help us by completing the questionnaire so we can consider your views when we build our Strategy. Just pull out the centre page, fill in the questionnaire and send it back to us by email or post, or pop it in the post box outside The Willow Centre's front door. If you prefer, complete it on our website ([cringlefordpc.org.uk](http://cringlefordpc.org.uk)) – look under 'Poll' on the index bar.

## Support for residents

At such uncertain times, it is good to hear how much help people have given their friends and neighbours. It was also good to see so much support for carers every Thursday. Parish Councillors have been contacting the vulnerable people in Cringleford who placed themselves on our list as needing assistance. This list is collated by South Norfolk and is a little out of date despite being only a couple of years old. If you need help or know anyone who does, please do get in touch with us (see the back of this newsletter for contact information) or contact the South Norfolk Hub directly on 01508 533933. From our calls, it seems most of the people

on our list are safe and are receiving help from friends, neighbours, shops or one of the volunteer groups. The Parish Council would like to thank all of those who have helped, especially The Village Stores on Intwood Road for all it has been doing for parishioners. If you would like to say thank you to a local volunteer, nominate a shining star for a South Norfolk Community Award and they could be in with a chance to receive £250 for a charity or community group of their choice. Nominate by 4 September at [south-norfolk.gov.uk/champions](https://south-norfolk.gov.uk/champions) or by calling 01508 533945.

## Cringleford comes back to life

On Monday July 6, our play areas were re-opened. We have new signage in place just to remind you that they are not cleaned regularly and that everyone should abide by Government guidelines and practice social distancing as much as is practical. On Monday August 3<sup>rd</sup> we opened The Willow Centre for booked sessions of up to 30 people. The Centre will be shut when no sessions are in operation. All organisers will need to record contact details for everyone in their sessions. The Centre, as was the case before lockdown, will be cleaned on a daily basis and surfaces/door handles, etc. more frequently. Please observe all the rules on the signs, including those on the one-way system, the use of masks, and hand sanitisation on entering and leaving the Centre. If you wish to visit for any reason other than a booked session, please contact [admin@cringlefordpc.org.uk](mailto:admin@cringlefordpc.org.uk) beforehand.



## Parish business

Council meetings are now operating virtually by video conferencing and, where meetings are public, you are welcome to join; the details are placed

on each agenda and these can be found on our website under ‘Meetings’. Our refurbishment of the Pavilion was hardly affected by the pandemic, but has now been delayed due to unforeseen circumstances and is likely to take a couple of months longer than anticipated. We apologise for the inconvenience caused. The pandemic has also meant the Parish has lost income from the Pavilion and The Willow Centre. The loss is substantial, but the Parish has been refused support from the Local Authority Discretionary Grants Fund and the Business Support Grant. We have now written to the Secretary of State for Housing, Communities and Local Government to ask for support.

The Local Government Boundary Commission consultation on draft recommendations for England was also delayed , but has recently restarted ([www.lgbce.org.uk/all-reviews/eastern/norfolk/norfolk-county-council](http://www.lgbce.org.uk/all-reviews/eastern/norfolk/norfolk-county-council)) and Highways England have restarted the Thickthorn Project, the latest details of which can be found below.

## Cringleford developments

All of the housing developers in Cringleford are back on site now. Big Sky’s work did not stop during the pandemic, but the other sites by Kier and by Barratt David Wilson Homes (BDWH) were paused. We hope to hear their progress for our next edition. BDWH have applied under the Government’s Covid-19 legislation to extend their working hours if necessary and the Parish has requested conditions to be placed on the extension, if granted. At the time of writing, permission had not been granted by South Norfolk Council. The handover of Roundhouse Park to the Parish has still not been completed but is imminent. If you are concerned about the overgrown state of some of the verges, Vistry, who now include Bovis Homes and Linden Homes, have just confirmed that they have organised a landscaper to attend the estate in a few weeks’ time to clear up all the weeds that are growing out of the side of the roads.

*St Giles Park.* Big Sky Living’s Development for 350 homes started on site in March with the first phase of 60 houses including 20 Affordable Homes. It is planned to start the marketing through local estate agents Stratfords in September with the show homes being opened in October. The next phase of

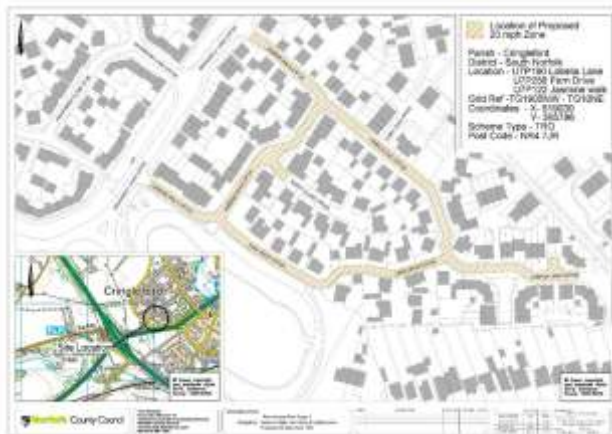
a further 40 houses will be starting on site in October. The recent dry weather has meant that there have been some problems with dust but the contractor, Carter Homes, is now undertaking additional measures on site which should alleviate this issue. Off-site works on Cantley Lane are currently underway with Anglian Water working on the water mains. This will be followed by works to install new gas mains and electricity connections to the site by GTC and then the required works to Cantley Lane itself adjacent to the site entrance near Brettingham Avenue will be undertaken by Ovamill. It is hoped all these works will be concluded by the end of the year although it is not currently planned to open the site access to general traffic until the first homes on site are occupied next year. In addition, road construction and drainage works will be being carried out on the closed section of Cantley Lane to link land south of lane to the to that to the north. This work will be being carried out by the civil engineering contractor Ovamill during the next few months. Whilst the works are underway the contractor will need to ensure safe access is maintained for those using the footpath/cycle bridge over the A11. We will provide updates on progress on this development in future editions of the magazine. [Information supplied by Big Sky.]

*Thickthorn Interchange.* We have been sent the current plans for improvements to the Thickthorn Interchange. You can find an update here ([assets.highwaysengland.co.uk/roads/road-projects/A47+thickthorn/Project+update%2C+latest+design%2C+July+2020.pdf](https://assets.highwaysengland.co.uk/roads/road-projects/A47+thickthorn/Project+update%2C+latest+design%2C+July+2020.pdf)) or see the plan via our website news feed. Highways England have started archaeological investigations by trenching south of the A47 near to the junction.

## Keeping our roads safe

The Parish Council has been tackling issues of road safety over the last few years where we have identified issues, for example the Intwood Road/Keswick Road crossroads. This improvement was funded via the Parish Partnership Scheme where we shared costs with the County. This year we will be installing speed signs near Cringleford Primary School to slow down traffic as it approaches the school on Dragonfly Lane.

We have decided to look at the whole Parish now, to identify safety 'hot spots' and potential future safety issues to see if there are any remedies that we can put in place in collaboration with the District and County. It has become even more important with more people out and about on bicycles or walking. For example, we are investigating further traffic calming measures and the possibility of making



most of Cringleford 20 mph. Norfolk County Council is already consulting on a 20 mph limit along parts of Roundhouse Park (see map) as a prelude to making the whole estate 20 mph. You can view details online at [norfolk.citizenspace.com/environment-transport-and-development/cringleford-roundhouse-park-stage-1-proposed-20mph/](https://norfolk.citizenspace.com/environment-transport-and-development/cringleford-roundhouse-park-stage-1-proposed-20mph/). Any objections and representations must be made in writing to Mrs Simmons at County Hall by 18th August 2020 or by email to [trafficorders@norfolk.gov.uk](mailto:trafficorders@norfolk.gov.uk). If you have any further views on the issue of road safety in Cringleford, please do get in touch with the Parish Clerk ([clerk@cringlefordpc.org.uk](mailto:clerk@cringlefordpc.org.uk)). However, we need to draw to everyone's attention, especially cyclists, that the footbridge adjacent to Cringleford Bridge is precisely that, a footbridge for pedestrians; it is not a cycle path. Consequently, if you cycle across it you are breaking the law (Rule 64, Highway Code). Several pedestrians have had near-misses with cyclists who, when challenged, have been less than polite.

## Bus stops

If you are using buses, you may have noticed that the bus stops, partly paid for by the Parish, near Cavill Court are now in place. Unfortunately, when they were installed, the anticipated drop-down kerbs from the platform

to the road were not built. We have now asked that these be put in place and Norfolk County Council have agreed. We hope the stops will improve access to buses now that they do not go through Roundhouse Park.

### Feel like a long walk?

If you fancy a long walk, we have been informed of a project that Norfolk County Council is working on to improve the 17-mile long Kett's Country Walk that starts in Cringleford. It is funded through the Greater Norwich Growth Board and will improve waymarking and access on the path. It will also involve creating five brand new circular walks to connect local communities to the linear route and other green spaces. The long-distance path and all circular walks will follow existing public rights



of way or quiet roads and is due to be completed in the spring of 2022.

### Have your say on the Norwich Western link

The preferred route for the link road between the A47 Southern bypass and the Northern Distributor Road (Broadland Northway) has been chosen. Norfolk County Council have opened a consultation exercise for people to have a say. More details can be found at [norfolk.citizenspace.com/consultation/norwich-western-link-local-access-consultation/](https://norfolk.citizenspace.com/consultation/norwich-western-link-local-access-consultation/). The consultation closes on 20 September 2020.

*Your Parish Council hopes that this issue had been informative. Please do complete our questionnaire and, as always, we are happy to receive any comments on Parish issues.*



# Useful Contacts and Information

## Cringleford Parish Council

Cringleford Parish Council has monthly meetings (except August) at The Willow Centre. Full Council is held on the second Thursday and the Planning and Environment Committee on the first Wednesday. Parishioners are welcome to attend these meetings via Zoom (details inside).



Parish Clerk

01603 250198,  
[clerk@cringlefordpc.org.uk](mailto:clerk@cringlefordpc.org.uk)

Room Bookings

01603 457222  
[admin@cringlefordpc.org.uk](mailto:admin@cringlefordpc.org.uk)

Website

[cringlefordpc.org.uk](http://cringlefordpc.org.uk)

Facebook

[cringlefordpc](https://www.facebook.com/cringlefordpc)

## Church Hall/Patteson Room bookings

[01603 259138](tel:01603259138) / [01508 218732](tel:01508218732)



## District Councillors

Daniel Elmer - [delmer@s-norfolk.gov.uk](mailto:delmer@s-norfolk.gov.uk)

William Kemp - [wkemp@s-norfolk.gov.uk](mailto:wkemp@s-norfolk.gov.uk)



## County Councillor

David Bills - [david.bills.cllr@norfolk.gov.uk](mailto:david.bills.cllr@norfolk.gov.uk)

Road works information [one.network/](http://one.network/)

Highways reporting form (potholes, overhanging trees, etc.)

[www.norfolk.gov.uk/roads-and-transport/roads/report-a-problem](http://www.norfolk.gov.uk/roads-and-transport/roads/report-a-problem)



## The Willow Centre recycling

- [clothing and shoe bank](#) in the car park
- drop-off point for 'Gift Your Shoes' is not currently available
- [Norwich Foodbank drop-offs](#) to donate non-perishable food, drink or toiletries, by appointment only [01603 457222](tel:01603457222)
- [battery](#) collection point is closed currently
- [book swap](#) in the bistro area is not operating at present

Holding a one-off event, a regular class or sports match?



Contact us to see if we have space in The Willow Centre or the refurbished Pavilion in the autumn