

## **Construction of new primary school on land off Colney Lane (previously Newfound Farm), Cringleford**

### **Plans for proposed new school and nursery.**

Dear Neighbour,

As part of Norfolk County Council Children Services commitment to invest in the growth of primary education provision we are proposing an exciting new 2 FE primary school with nursery provision.

A new school was agreed as part of the overall planning consent for the housing development off Colney Lane. This will provide a modern building with 14 classrooms, hall, studio space and outside area and playing field for 420 children.

A design team from NPS Property Consultants Ltd has been working closely with the County Council on possible solutions and we are getting close to agreeing a final design. We anticipate submitting a planning application in July 2022, and before doing so we would like to share the proposal with local residents.

Children's Services is holding an informal exhibition event on 19<sup>th</sup> April 2022 at Cringleford Parish Council, Willowcroft Way, Cringleford, NR4 7JJ between 12:30pm and 6pm. Representatives from NPS Property Consultants Ltd and Norfolk County Council will be available to answer questions you may have about the plans.

We are conscious that although national restrictions for Covid 19 have been relaxed, we still wish to minimise large groups of people meeting. In order to accommodate this, we are proposing to offer 20-minute timeslots with anyone who would like to come along and look at the plans. If you wish to come along, please get in touch via the email address overleaf.

These proposals are subject to any change in COVID-19 guidelines.

Alternatively, the outline proposals are overleaf and please feel free to provide comment, either by letter or email to the address below by the 6<sup>th</sup> May 2022.

Once the planning application has been submitted there will be the opportunity for individuals and interested parties to express their views to the planning authority as a formal submission. If approved, it is hoped work will start in March 2023, and have an approximate 12 month build duration, and this will be reviewed in line with central government guidance on COVID-19 working procedures.

Please be aware that these plans and dates are provisional and are subject to change. Please check the Norfolk County Council Planning website once the application has been submitted.

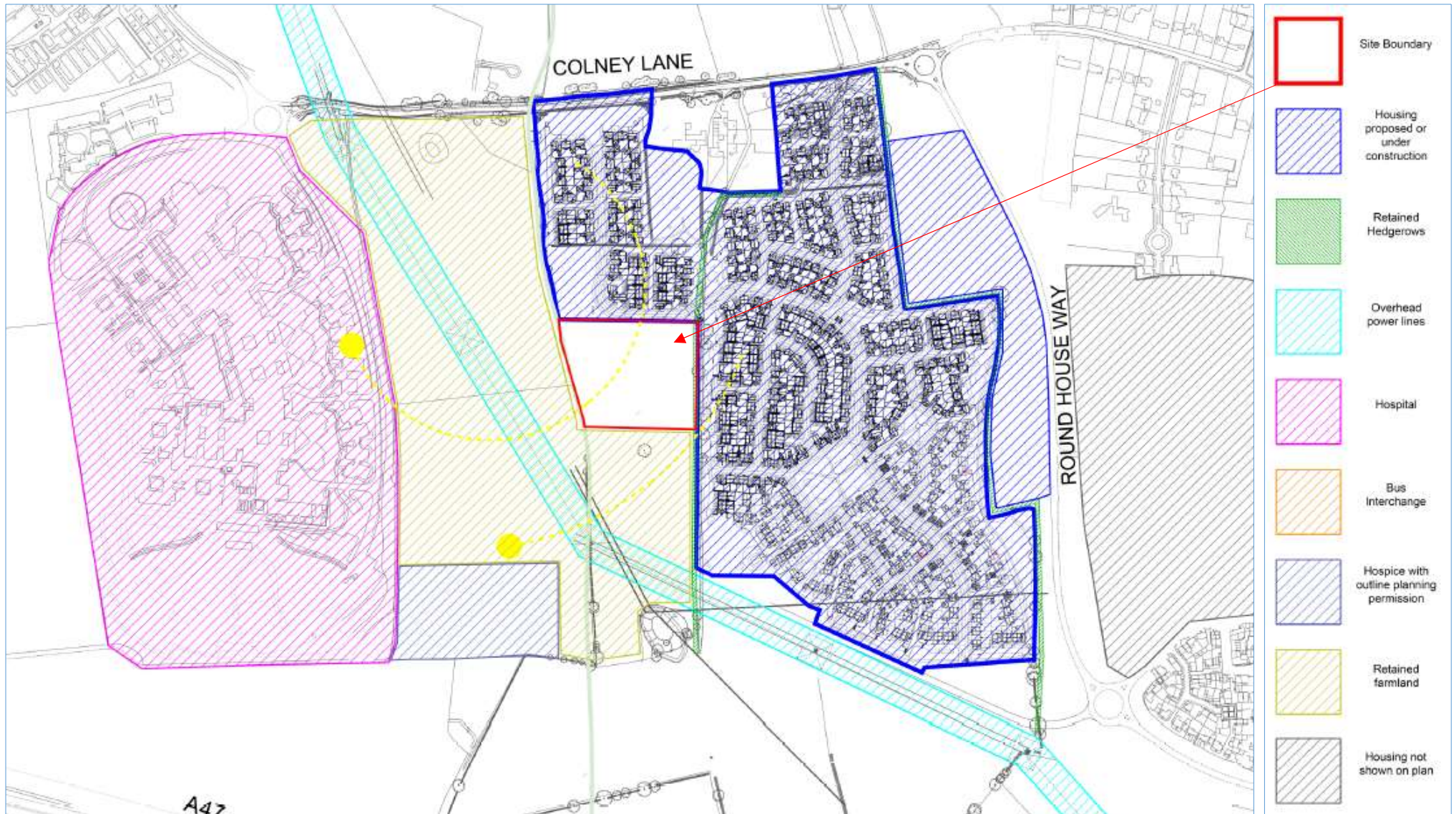
If you would like to discuss any of the above or have any queries regarding the proposals please contact Chris Brooker, Children's Services Project Officer by email [schoolreview@norfolk.gov.uk](mailto:schoolreview@norfolk.gov.uk)

3D artist's impression of new school building (looking north).





# Analysis of existing site and surround housing development





# School site plan

