

Volume 6, Issue 3
Autumn 2025

CRINGLEFORD PARISH
COUNCIL



Newsletter

Inside this issue

The Parish Matters — gritty matters, all charged up, sad to see, neighbourhood plan takes shape, settling in nicely thank you	2
All pumped up!	4
Volunteers needed	6
Useful contacts and information	8

Cringelford Parish Council has monthly meetings (except in August).

The Planning and Environment Committee is held on the first Wednesday and Full Council on the second Wednesday of each month. Parishioners are welcome to join these meetings (details on website).

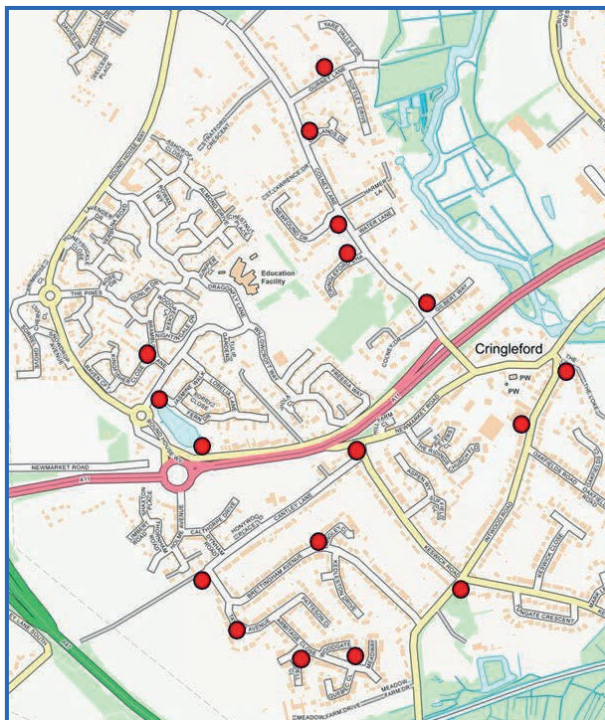
There are also additional groups that provide advice to Council — the Recreation and Amenities Advisory Group and the Finance Advisory Group.

Contact us: clerk@cringlefordpc.org.uk or 01603 250198

The Parish Matters

Gritty matters. Winter will be here soon and we wanted to let you know that we have a number of grit bins around the Parish. They are located

around Cringleford at the locations shown on the adjacent map. The bins are for you, as residents, to use to make the roads and pavements safer in wintry weather. The Parish Council owns the bins, whilst Norfolk County Council fills them with a salt/sand mix twice per winter season, once in November or December and again after Christmas, depending on weather conditions.



Location of yellow grit bins (red dots) across Cringleford

Due to limited funds they will only refill them

at other times when resources allow, and they do not refill grit bins on request, so please use the grit sparingly. Apparently, a tablespoon of salt will treat an area of one square metre.

All charged up. Just a reminder that we now have electric car charging points at both The Jubilee Centre (TJC) and The Willow Centre (TWC). The ones at TJC are ours and cost 50p /kW for fast charging (22kW) and 70p for rapid charging (50kW), which is less than the Zapmap Price Index (www.zapmap.com/ev-stats/charging-price-index) at August 2025. The fast chargers at TWC are owned and operated by Norfolk County Council whose price is

55p/kW, slightly above the Zapmap index. They all have contactless payment or you can use the Electroad or Fuuse apps to pay.

Sad to see. We are disappointed to report that we have seen a number of items being damaged around Cringleford over the last few months including a bin at the end of Colney Lane that was set alight, graffiti in various places including across road markings, and damage to one of our new woodland animal carvings. All such incidents are reported to the police. We have also noted that the zip wire seat in the play area by TWC has been mauled yet again by a dog. The seat costs at least £500 to replace, so we ask all dog owners to please keep their dogs under control. Please may we remind owners that dogs are not allowed in the children's play areas. We would also ask everyone to be vigilant and report damage to our Clerk (clerk@cringlefordpc.org.uk) or anti-social behaviour to the police .



*Car charging points at TJC.
There are six 22kW and
two 50kW chargers*

Neighbourhood plan takes shape. Cringleford's revised neighbourhood plan is taking shape nicely. We have agreed our vision and objectives and a draft plan was received at September's meeting. As soon as the draft is completed later this year or early next year, it will be sent out to everyone for consultation. Once your comments have been incorporated, it will then go to Government for approval. Updates about the plan can be found on our website under 'Documents'.

Settling in nicely, thank you. Our Newfound allotments are taking shape. The fencing has been put in place and the bounding hedges cut back to make cultivation easier. The plot holders have thrown themselves into planting and the fruits of their labour are already apparent. Some had the time and foresight to get ready before the plots were even handed over and with the light and warmth of early autumn behind them will have vegetables ready for Christmas.



Views of Newfound allotments on Cringleford Heights last month

All pumped up!

The Parish Council has chosen its contractor for installing a pump track on the field next to TWC. Three companies were shortlisted for interview by Councillors and a representative of our young person's focus group that originally came up with the idea. The successful company was Four One Four who have much experience installing skate parks and pump tracks.

Following consultation across the Parish several years ago on what new facilities people would like to see in our Recreation Strategy, the Council decided to place a pump track on the field.



Designer's visualisation of one potential pump track option



Proposed location of pump track on TWC's playing field

The final track design will be decided soon and we will submit a planning application shortly afterwards. The designs and more information will be on display at TWC around the end of October.

Volunteers needed

This autumn and winter we will be undertaking two tree planting projects to improve biodiversity in Cringleford. The first will take place in late November/early December when we will be planting Miyawaki mini-forests on St Giles Park (between Codde Close and the footpath) and on Roundhouse Park (opposite The Willow Centre) using a grant from South Norfolk Council.

What are mini forests, you may well ask. Miyawaki forests are an innovative approach to encouraging wildlife to thrive in populated areas. The approach was developed by Japanese botanist Dr Akira Miyawaki. Each forest is normally about a tennis court size, but can be smaller as in our case. It involves the dense planting of lots of different native species using intensive cultivation for the first few years. The aim is to create an ecosystem rich in biodiversity where plants, birds, insects and other species can live and



A Miyawaki mini forest shortly after planting

thrive with minimal disturbance. Native tree species are selected to create 'layers' of differing heights, thus providing a range of different ecosystems within a modest area.

Within Norfolk, mini forests have already been planted at Fakenham, Sheringham, North Walsham, Sprowston, and Hellesdon as part of a countrywide effort. You can find more information here:

<https://www.north-norfolk.gov.uk/tasks/projects/miyawaki-forest-project/>
or here:

creatingtomorrowforests.co.uk/blog/the-miyawaki-method-for-creating-forests.

Our second project, is to plant a community orchard on St Giles Park adjacent to the bottom of Spencer Rise. This orchard, our second, will consist mainly of Norfolk apple and pear varieties sourced from the East of England Apples and Orchard Project near Fakenham (applesandorchards.org.uk/). Our first orchard was planted next to Newfound Allotments and is growing well.

We are working with The Conservation Volunteers on the projects, but we would welcome offers of help with the planting from the community for both these projects. If you feel you or your family would like to help, please get in touch with our Clerk by the middle of November (clerk@cringlefordpc.org.uk).



The mini forest at Warren Avenue, Fakenham in May 2025 after 3 years

USEFUL CONTACTS AND INFORMATION

District Councillors

Daniel.elmer@

southnorfolkandbroadland.gov.uk

Deborah.sacks@

southnorfolkandbroadland.gov.uk

Church Hall bookings

01603 259138

Patteson Room bookings

01508 218732

County Councillor

David.bills.cllr@norfolk.gov.uk

Highways

Roadworks Info: one. Network

Report a problem: www.norfolk.gov.uk/roads-and-transport/roads/report-a-problem

Police

James Smith Beat Manager

James.smith2@norfolk.police.uk

Cringleford Parish Council facilities available for hire



The Jubilee Centre sports hall is available to hire for sport and exercise groups, with nets and markings for badminton, pickleball,



volleyball and 5-a-side football.



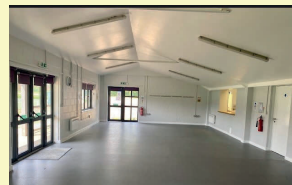
The Willow Centre

The Willow Centre, a

multi-purpose space with numerous rooms, perfect for parties, meetings, exercise classes and children's groups.



The Pavilion, a flexible space used by the football club, the tennis club and the cricket club, as well as residents running classes and having private parties.



For all booking enquiries please email

bookings@cringlefordpc.org.uk, or ring the following

numbers for further information: 01603 457222 (The Willow Centre), 01603

515644 (The Jubilee Centre & The Pavilion). Hire prices and further information can

be found on the Parish Council's website at www.cringlefordpc.org.uk.